



GYMNASIUM LINKSELBISCH-OST DRESDEN

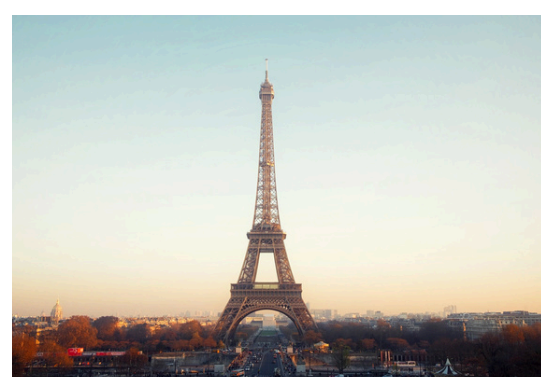
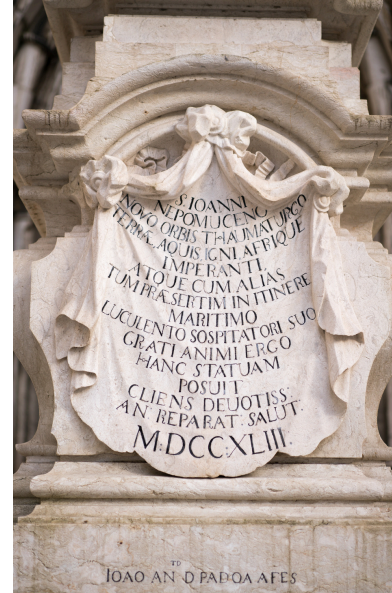
Here you can read a text about

general information



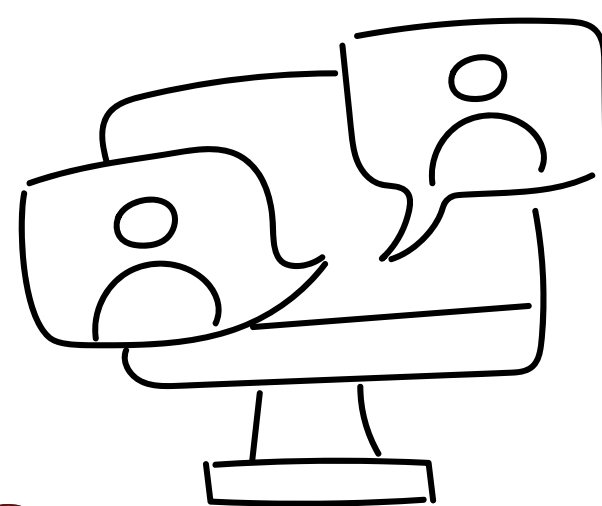
At our school, we have our own school merchandise, for example, a hoodie with our symbol (LEO). We also have a own channel. This is a page on instagram. Our school is known for its large schoolyard, but in 2026, we will move to a new school building (Bodenbacherstr. 140). At our school, you can learn English and, starting in class 6, Latin and French. We also have differnt groups, which support the LEO, for example: the library team, the school garden group, the student council, or the first aid group.

This was some general information about the LEO.



Special & Atypical Things

At our school, the LEO Grammar school, there are many things which are different compared to other schools in Germany and also in other countries. One of the most special things is the fact that our school was established in 2019, which was 6 years ago, so there are just 6 grades (grades 5-10) for now. Currently, a new school building is being built. Another interesting fact about LEO is that Mrs. Poll, our principal, takes care of a sustainable schoolyard and promotes healthy meals. In LEO, many things are digital or handled online, so we have digital screens in every room, an online sick note system, and even a 3D printer! At many schools, there are different elective courses where you have to choose one from a few options. LEO offers three options to choose from. If you want to become an actor, drama (theater course) would be the perfect pick for you. Later, you will learn more about the elective courses as well as the project days we have about twice a month.

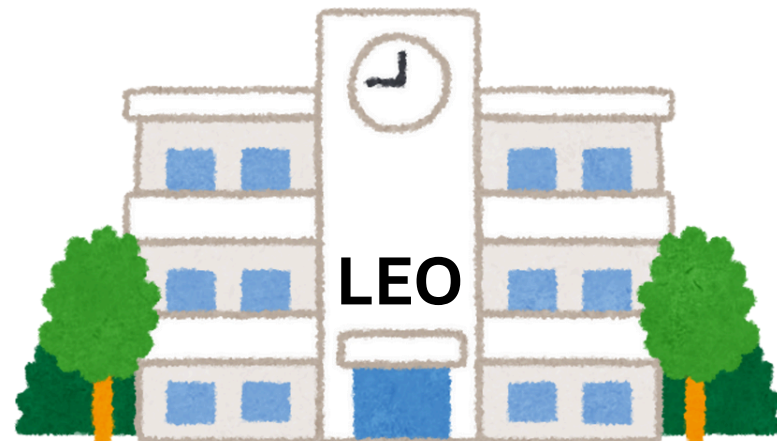


You have personal problems or feel uncomfortable at school? Our school social worker is always here for help! Mrs. Vondran is a very nice person and isn't going to tell anyone about your problems because of her professional secrecy. Wow, that was a lot of special and atypical things about our school! I guess now you are even more excited to visit it!



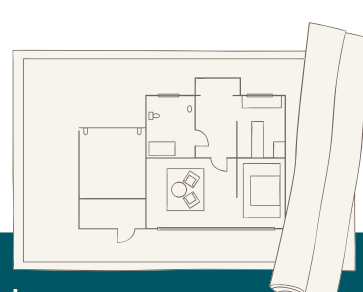
New School Construction

The new school building, which is expected to be completed in 2026/27, is located at Bodenbacher Straße 140. The building will have four floors and will be barrier-free to secure use for everyone, and the school will be equipped with various clusters, each assigned to a specific department, as well as self-study zones that enable students to learn independently. The building's location offers optimal connections to public transport. How will the location of the new school building affect students' daily commute? The direct connection to the Prof.-Ricker-Straße stop, which is served by Dresden ÖPNV lines 1 and 2, ensures a quick journey home. If the adjustments currently being made to Bodenbacher Straße are completed, traveling by bicycle will also be easy. Thus, the new school building will not only be functional but also easily accessible and sustainably integrated into the existing infrastructure.



Elective Courses

At the beginning of school, we all have the same subjects. In 8th grade, you can choose one of three elective courses. If you like acting or are interested in what people do in theater, then choose the Theater course. This elective course is a mix of music, art, and theater. You will learn how to act properly and perform on stage in front of many people. If you enjoy subjects like geography, biology, or politics, then the Sustainability course is right for you. In this profile, you will learn about sustainable living, fitness, nutrition, movement, group dynamics, and how to create healthy recipes. The goal is to take eco-friendly actions. If you like art, history, politics, and physics, then the architecture course is perfect for you. You will learn how to design and build small models of buildings. You will also explore how buildings are constructed and how to design interior spaces.



In grade 9, you go on an elective course trip. It's a little bit like a school trip but with the people in your elective course. You go to a city and look at things for your elective course or you have a project consistent with your elective course, that you are doing on the trip.

Project Days & Stakeholder Groups

At our school, there are some project days and stakeholder groups. Every month we have 2 project days. On these days we do interdisciplinary lessons in which we work on one topic with two subjects. Usually, we work in groups and complete creative tasks. On special project days, internal people come to us and discuss a topic with us. One day, we practiced accessibility and mobility with wheelchairs. That sounds interesting, right? A great thing is that we can learn about a specific topic for a whole day, but sometimes the project days result in grades. That's not very cool, but it's okay.



LEO has stakeholder groups too. If we want to change something at our school we can suggest it there. Festivals are organized and our school homepage is created by this groups. The groups consist of students from every age group, so we can socialize with other students. I think the project days and stakeholder group meetings are two really nice and special things at our school and we always have fun and a pleasant time there.



SegL

If you enjoy studying alone, SEGL is perfect for you. SEGL stands for self-directed learning tasks. Each quarter we have 2 subjects, in which lessons may be canceled, either by us or by our teachers. We work on them independently. In some subjects, these tasks are even assessed or graded. You either hand them in to the teacher or present them to the class. The purpose of these tasks is to learn how to learn independently. Teachers can also assign these tasks, which we then work on independently at home or sometimes at school, and integrate into their lessons. This saves them teaching time. After completing these tasks at the end of a quarter, they are usually discussed in class or compared independently. In summary, we can say that SEGL is perfect for exploring different learning styles.

